

ROE

ANNUAL REPORT

SU|NICA

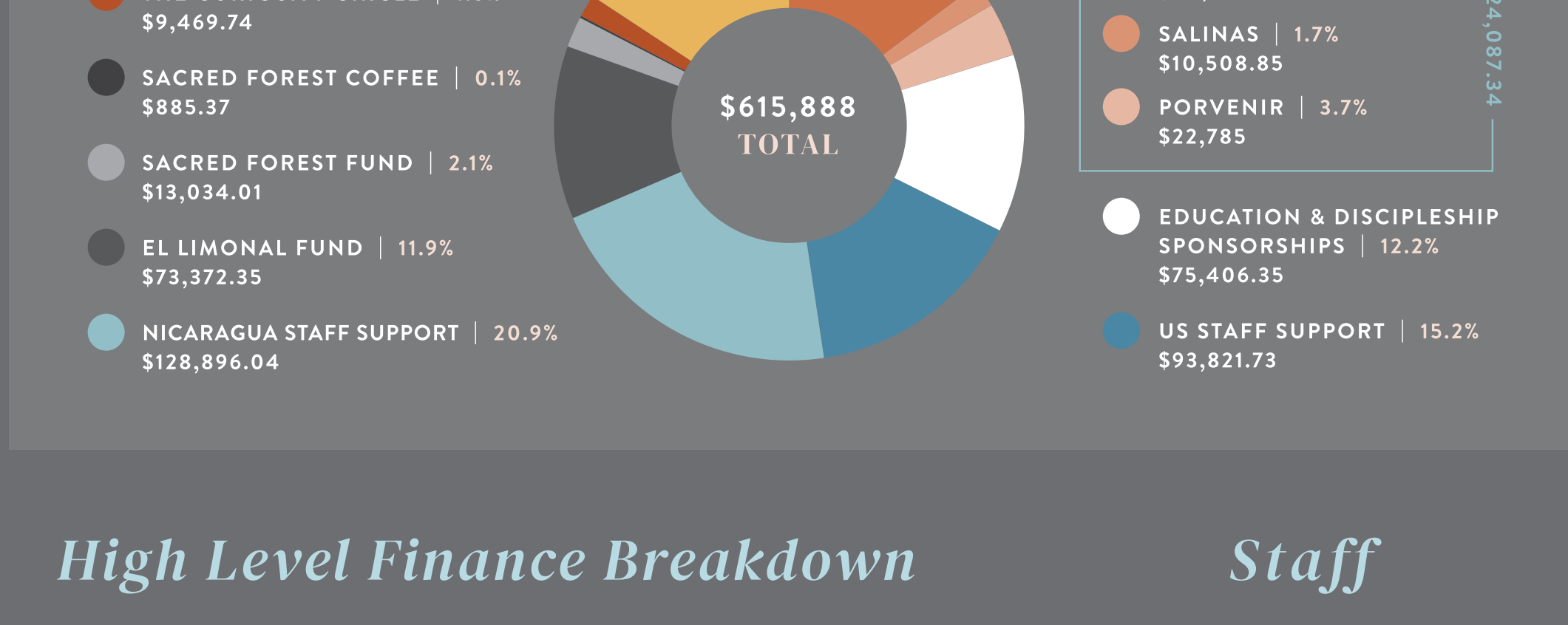
MISSION

Making disciples of Jesus through
clean water, education, & mentorship.

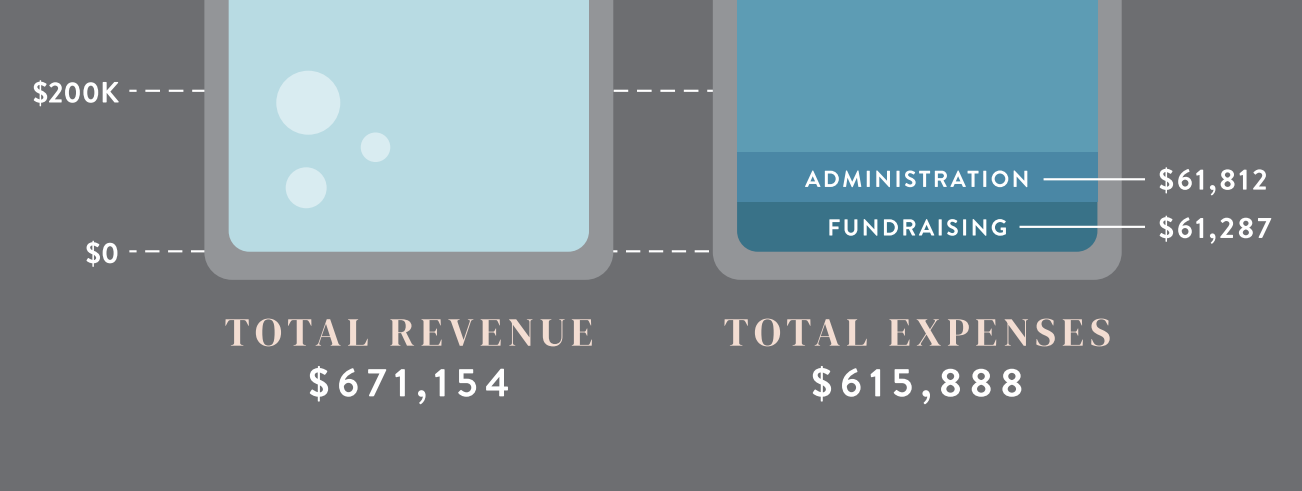


OPERATIONS

2018 Expenses



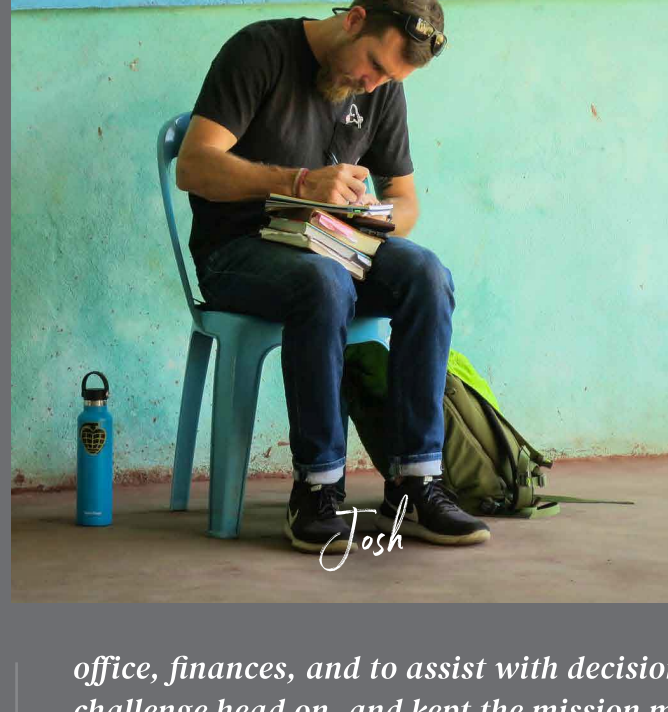
High Level Finance Breakdown



Staff



Staff Growth in the Face of Crisis



“ One of the most unexpectedly powerful impacts of last year’s craziness in Nicaragua was the growth of our staff.”

As the crisis was peaking, we made the difficult decision to take our family to Chile and stay with Betty’s parents. This was not a planned trip or one we really wanted to take, but amidst the chaos of the unfolding situation, we had to trust God was holding us and SuNica in the palm of His hand.

We bought our plane tickets, and then spent the next two days traversing barricades and fording rivers as we worked to meet up with as many of our team as possible. After many talks, tears, and prayers, we said goodbye, uncertain of how long until we could return.

One of the biggest challenges I face as a leader is to always be in the business of growth. I spend a lot of my energy dreaming of and working to build up the unrealized potential that I see in our staff. As we left, I had confidence in their abilities, but what happened next was incredible.

Erick led the way as Interim Director. Enyi and Chery stepped up mightily to manage the office, finances, and to assist with decision making. And that only scratches the surface, because every single member of our team met the challenge head on, and kept the mission moving forward.

The impact those months of being forced to lead each other, make decisions, take risks, and work together were something I never expected to be so powerful. It wasn’t without its challenges, but the growth that happened in that chaotic time was an immense catalyst for change that I see working in our team still.

Our staff is more grounded and aware of the need for real change in the hearts and lives of those we work with. They’re also more expectant and hopeful in Jesus, and in his ability to work in and through the worst of situations. This is huge because we deal with heavy, heavy stuff everyday. Now seeing hard life situations with no end in sight or communities without water are not just tragedies, they are opportunities for God to show up with love and compassion through us, transforming lives and communities with His grace and goodness!

If ever there is a silver lining to suffering and strife, it is the absolute ripe conditions it produces for growth when we focus our eyes on both Who and what matters most. 2018 was a tough year for our organization and all of Nicaragua, but we believe God will and has used it to make us stronger and more faithful.

- JOSH PEASE

EDUCATION & MENTORSHIP

At the beginning of April, we dedicated the El Limonal Community Center in the best way we know how - with a huge party! The kids we serve, their families, and other children from the community were joined by our staff, volunteer leaders, and even a few visitors on short-term missions trips for the all-day celebration.

Then, when the Crisis began on April 19th, the importance of our Discipleship program became even more evident. Here’s Erick Luna with a few words on the volunteer leaders in El Limonal.

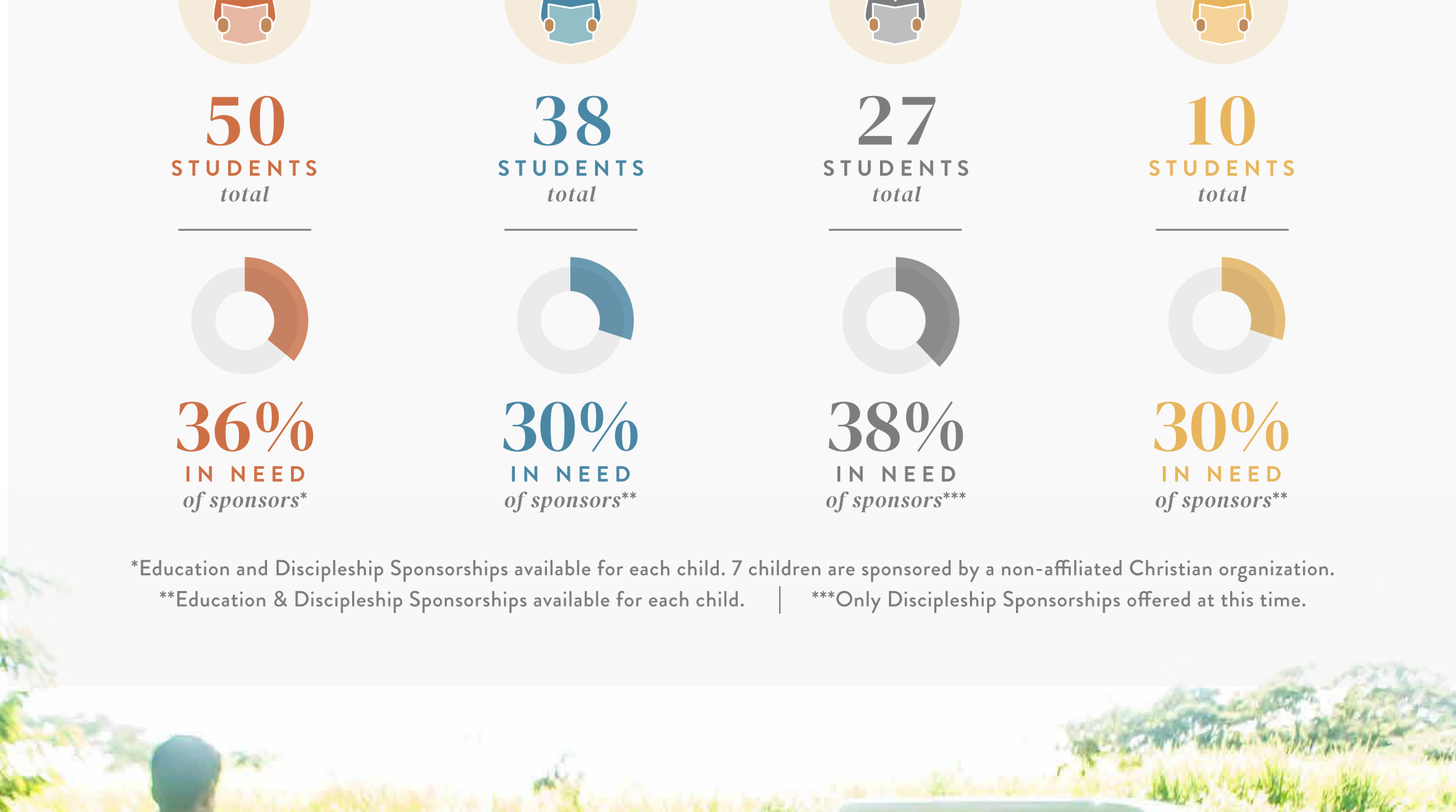
“ What happened over the last year was a clear example how our program is working in our volunteer leaders. The empowerment they showed during the Crisis, staying constant in their service, and finding ways to organize and carry out all activities they had planned for the year without complaint. The leaders stayed close with their kids - always present - and I watched as their commitment grew during that difficult time.



Similar situations played out in Salinas Grande and El Porvenir, as our staff and the volunteer leaders continued to pour into their students, providing consistent attention, encouragement, and examples of how to be disciples of Jesus even in the middle of a political crisis. We often talk about our Discipleship Program’s goal is to change a whole generation of Nicaraguans, and Erick got to witness it happening right before his eyes.

Thank God for His leaders! ”

Sponsorships



WATER

2018 saw us complete our second community-led, fully sustainable, water project. But as you know, these water projects are about so much more than just the health benefits of clean water.



Here’s Betty Pease in her own words -

“ When I think about San Carlos, I think about a hard-working, organized community, where people think about their neighbor.

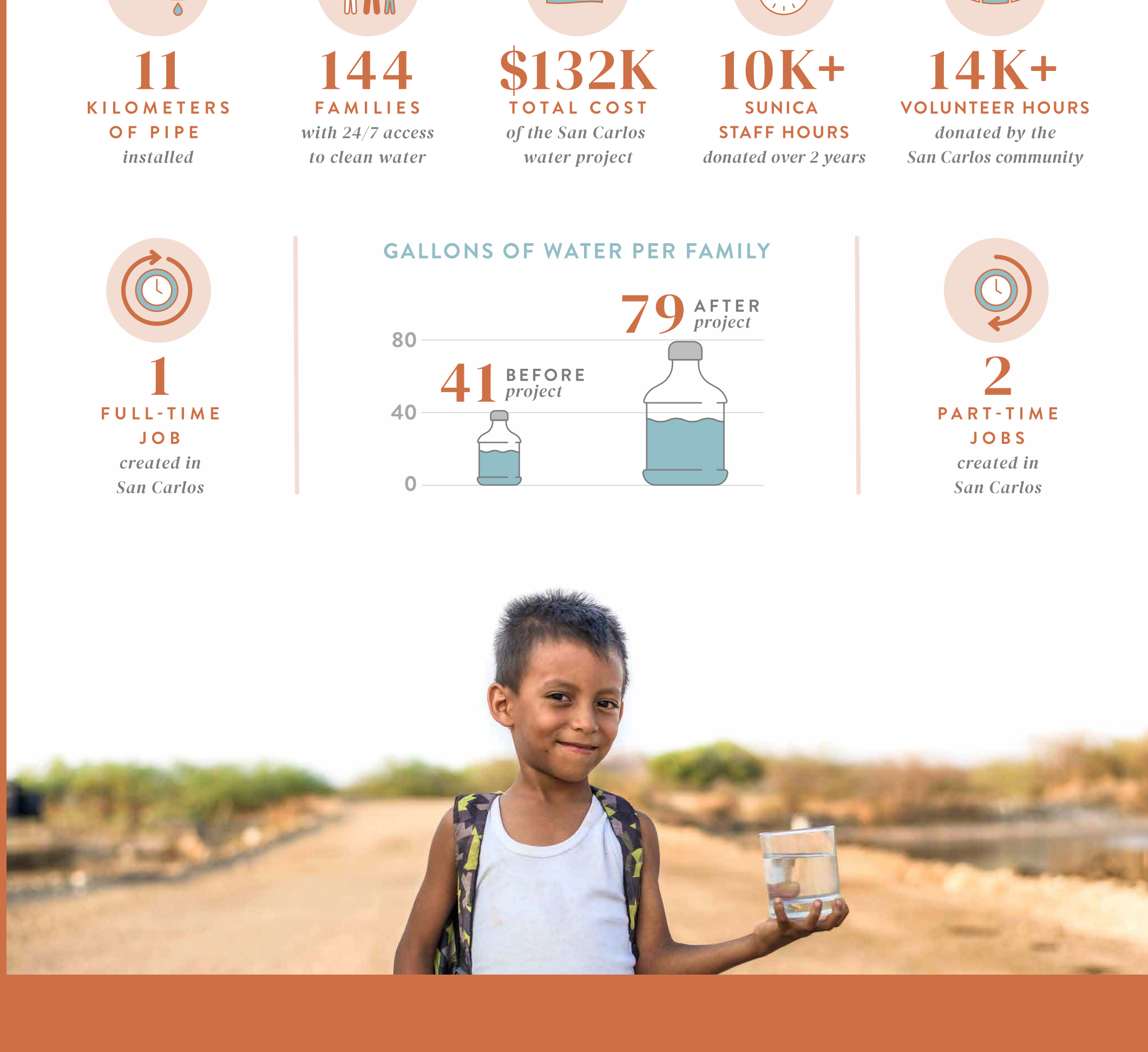
The community organized into mixed groups of men and women, young and old, working an eight-hour shift, every-other week.

They would arrive early with food and water, dressed to work through the sun or rain. In the hours spent together, they became more united, supporting each other in the moments when the sun was smothering and the digging was hard. They started every exhausting day with smiles because they knew their purpose and the hope of having water in their homes.

And after two years from the project’s start (and over 11 kilometers of pipe installed!), the day finally arrived when they saw water flowing in their own homes. Turning on the shower or washing clothes became an extraordinary experience – no more hauling water, just turning on the tap! ”

And as soon as the water turned on in San Carlos, our team began the upfront work on SuNica’s next two projects: Health and Hygiene education in El Porvenir in preparation for Maden Bathrooms, and the delicate social work necessary to rally a community together for the next Turn On The Water in Salinas Grande, with a goal of sustainable water there by 2020.

San Carlos Project



SACRED FOREST

The Sacred Forest is 174 acres of pristine rainforest on the side of a mountain, just outside the Nicaraguan city of Matagalpa. This land was generously gifted to SuNica by Jim and Sarah Hornsby, an American couple who’ve lived in Nicaragua since the 1980s, working with Young Life and other Christian initiatives.

It’s truly a place that nourishes every aspect of SuNica’s mission. In 2018, we began taking groups of kids and volunteer leaders on Wilderness Retreats for the Biblical practice of withdrawing to the wilderness to seek God’s presence. Additionally, we established Sacred Forest Coffee as a means to fund a portion of those Discipleship activities and to feed into the local economy. And we dedicated 2018’s Christmas fundraising campaign, The List, to fund future improvements to the property that will maintain and sustain this beautiful piece of God’s creation for years to come.

